

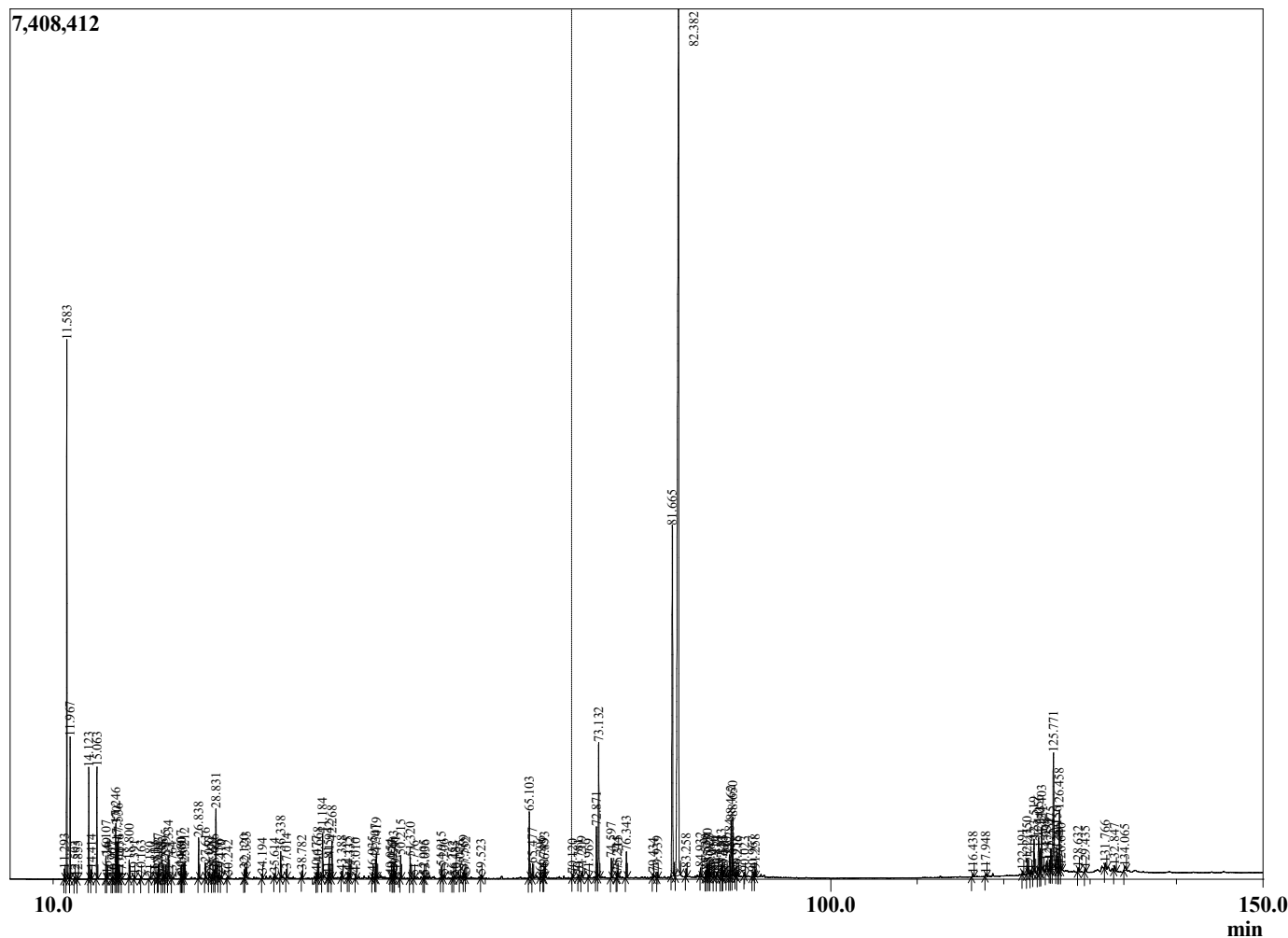
Sample Information

Sample Type : Essential Oil  
 Sample Name : Boswellia carterii  
 Injection Volume : 0.10

Frankincense CO2  
 Lot# 2IDF2-FH  
 Country: India



Chromatogram Boswellia serrata



R.Time	Name	Area%
11.293	Hashishene	0.12
11.583	alpha-Thujene	7.59
11.967	alpha-Pinene	1.80
12.503	Thuja-2,4(10)diene	0.03
12.855	Camphene	0.03
14.123	Sabinene	1.55
14.414	beta-Pinene	0.12
15.063	Myrcene	1.55
16.107	alpha-Phellandrene	0.34
16.249	delta-3-Carene	0.07
16.767	alpha-Terpinene	0.02
16.927	ortho-Cymene	0.03
17.246	para-Cymene	0.82
17.370	Unidentified	0.54
17.536	Limonene	0.58
17.636	beta-Phellandrene	0.14
17.947	cis-beta-Ocimene	0.02
18.800	Unidentified	0.29
19.391	gamma-Terpinene	0.05
20.163	trans-Sabinene hydrate	0.05
21.180	Terpinolene	0.04
21.814	Unidentified	0.02
22.127	Linalool	0.15
22.193	cis-Sabinene hydrate	0.07
22.588	alpha-Thujone	0.03
22.756	Unidentified	0.06
22.995	trans-2-Caren-4-ol	0.22
23.334	Thujone	0.50
23.764	Unidentified	0.02
24.807	trans-Sabinol	0.20
24.860	trans-Pinocarveol	0.06
24.969	cis-Verbenol	0.04
25.212	trans-Verbenol	0.27
26.838	alpha-Phellandrene epoxide isomer	0.69
27.616	Terpinen-4-ol	0.26
28.052	para-Cymen-8-ol	0.09
28.390	para-Mentha-1,5-dien-7-ol	0.08
28.626	alpha-Terpineol	0.16
28.831	Estragole	1.22
29.156	alpha-Phellandrene epoxide	0.07
29.410	Verbenone	0.05
30.242	trans-Carveol	0.05
32.120	Unidentified	0.15
32.333	Linalyl acetate	0.24
34.194	Unidentified	0.07
35.614	Unidentified	0.10
36.338	Unidentified	0.50
37.014	Unidentified	0.15
38.782	alpha-Terpinyl acetate	0.12
40.477	Unidentified	0.11
40.668	alpha-Copaene	0.29
41.184	beta-Bourbonene	0.83
41.815	Unidentified	0.04
41.942	Unidentified	0.40
42.268	Methyleugenol	0.69
43.388	beta-Ylangene	0.16

R.Time	Name	Area%
44.115	beta-Copaene	0.12
44.332	trans-alpha-Bergamotene	0.08
45.010	Isogermacrene D	0.10
46.935	10-beta-H-Cadina-1(6),4-diene	0.12
47.307	trans-Cadina-1(6),4-diene	0.35
47.419	gamma-Himachelene	0.48
49.054	Unidentified	0.04
49.277	gamma-Cadinene	0.05
49.403	Cubebol	0.24
49.591	delta-Cadinene	0.15
50.215	Kessane	0.46
51.320	Elimicin	0.51
51.776	Unidentified	0.05
52.905	Unidentified	0.05
53.036	Spathulenol	0.05
54.915	Copaborneol	0.22
55.206	Unidentified	0.06
56.252	Unidentified	0.04
56.485	Unidentified	0.05
57.076	tau-Cadinol	0.05
57.569	alpha-Eudesmol	0.20
57.752	Unidentified	0.08
59.523	Unidentified	0.06
65.103	Phellandrene dimer	1.36
65.477	Phellandrene dimer	0.30
66.396	Hexadecanal	0.10
66.745	Phellandrene dimer	0.05
66.893	Phellandrene dimer	0.21
70.120	Unidentified	0.06
70.781	Unidentified	0.06
71.209	Unidentified	0.14
71.969	Unidentified	0.06
72.871	meta-Camphorene	1.01
73.132	Neocembrene	2.95
74.597	para-Camphorene	0.39
75.244	Unidentified	0.08
75.315	Unidentified	0.12
76.343	Verticilla-4(20),7,11-triene	0.56
79.434	Unidentified	0.11
79.939	Unidentified	0.11
81.665	Cembrenol	9.08
82.382	Serratol	37.57
83.258	Unidentified	0.16
84.932	Unidentified	0.20
85.530	Unidentified	0.13
85.730	Unidentified	0.26
85.923	Unidentified	0.16
86.087	Unidentified	0.09
86.450	Unidentified	0.12
86.814	Unidentified	0.14
87.323	Unidentified	0.32
87.440	Unidentified	0.09
87.575	Unidentified	0.14
87.940	Unidentified	0.06
88.284	Unidentified	0.56
88.462	Unidentified	1.19
88.650	Unidentified	1.25
88.958	Unidentified	0.06
89.216	Unidentified	0.11
90.023	Unidentified	0.07
90.967	Unidentified	0.16
91.258	Unidentified	0.15

R.Time	Name	Area%
116.438	beta-Amyrin acetate	0.08
117.948	Unidentified	0.07
122.191	Unidentified	0.08
122.750	Unidentified	0.38
123.143	Unidentified	0.07
123.519	Unidentified	0.88
124.056	Unidentified	1.12
124.243	Unidentified	0.66
124.403	alpha-Amyrin acetate	1.21
124.994	Amyrin acetate isomer	0.36
125.352	Unidentified	0.21
125.475	Amyrin acetate isomer	0.59
125.771	Amyrin acetate isomer	3.78
126.156	Unidentified	0.56
126.309	Amyrin acetate isomer	0.13
126.458	Amyrin acetate isomer	1.60
126.640	Unidentified	0.13
128.632	Unidentified	0.10
129.435	Amyrin acetate isomer	0.10
131.766	Unidentified	0.19
132.847	Unidentified	0.19
134.065	Amyrin acetate isomer	0.19
		100.00